

# S H E Q A L E R T



## HIGH POTENTIAL NEAR MISS CROWD WINCH MOTOR FAILURE



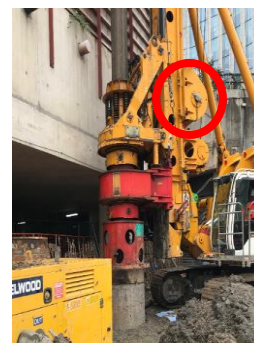
### BACKGROUND

It was reported, the BG39 was in the process of drilling pile position 15 when the rotary suddenly dropped between 4-5m and landed on top of the pile casing. There was nobody at immediate risk at the time of the incident, however the rig attendant was standing nearby just prior to the incident.

### INITIAL INVESTIGATION FINDINGS

The initial investigation has found the following:

- This event has never happened before within BSL or to the knowledge of the rig manufacturer.
- The crowd winch motor on the rig has suffered a catastrophic failure resulting in the rotary to drop in an uncontrolled manner.
- When the crowd winch lever is not in use the brake is engaged and automatically disengaged during operation.
- The failure happened as the operator was operating the crowd lever.
- The motor's casing was cracked, and this would have resulted in a significant loss of pressure on the system including the brake.
- When the casing was inspected various internal parts of the mechanism had been damaged beyond repair.
- The likely cause of the casing cracking was due to a hydraulic blockage resulting in a significant build-up of pressure.



Date: 23/10/2020

HIGH POTENTIAL NEAR MISS –  
WINCH MOTOR FAILURE



8742679777



## RECCOMENDATIONS

The following recommendations have been made following this event:

- Safe exclusion zones in line with the FPS guidance should be strictly enforced on all sites. As a reminder, exclusion zones are there to prevent people being struck by moving plant and to protect them potential falling objects whilst working at ground level.
- All staff are to be re-briefed on these requirements.
- The BSL Plant Department have now implemented a servicing schedule for this type of motor that involves a service at a 1,000hrs intervals.
- The rig manufacturer has been contacted to undertake their own independent investigation and to look at changing the manufacturers operating manual to include the 1,000hr service and inspection regime on this type of motor.

